



# SAFElife™

## Multi-Panel Rapid Hair Test

Identify individuals who have been able to "pass" traditional drug tests while misusing substances to get them the help they need. The solution provides a comprehensive list of **14 drug tests and an impressive > 95% accuracy rate when compared with the gold standard LC-MS/MS testing.**



### Features and Benefits

- **Extended Detection Window:** Drugs incorporate into hair and remain detectable for up to 3 months.
- **Customizable Panels:** Choose from a comprehensive menu of 14 accurate and reliable drug tests.
- **Anti-Adulteration:** The hair testing process minimizes the risk of adulteration, ensuring result reliability.
- **Rapid Results:** Results in 5 Minutes; 15 minutes for THC.
- **Accurate and Reliable:** Health Canada Authorized

### Available Drug Test Menu with Customizable Panel Options.

(Maximum panel size: 12-panel test)

- 6-Monoacetylmorphine (6-MAM)
- Amphetamine (AMP)
- Barbitol (BAR)
- Benzoylcegonine (BE)
- Benzodiazepines (BZO)
- Cocaine (COC)
- Fentanyl (FTY)
- Methylenedioxyamphetamine (MDMA)
- Methamphetamine (MET/mAMP)
- Methadone (MTD)
- Opiate (OPI)
- Oxycodone (OXY)
- Phencyclidine (PCP)
- Marijuana (THC)

**Note:** THC is a standalone test.

### Use Settings

Suitable for use in multiple drug testing settings including general and specialized workplace testing, law enforcement and probation/other correctional center testing



General workplace



Law Enforcement



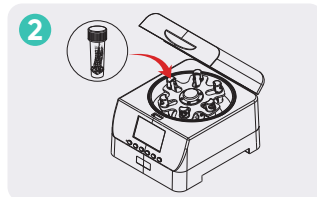
Probation/Corrections

### Procedure

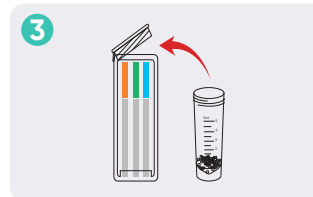
Efficient, accurate, on-site simplicity for drug testing confidence.



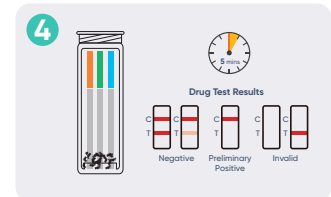
1 Collect the hair sample, place it into the processing tube, and screw the cap.



2 Insert the processing tube into the SAFElife™ hair processor and press the start button.



3 Remove the processing tube. Wait 3 minutes for sample cooling and pour the tube contents into the testing tube.



4 Read the results between 5 to 15 min (depending on the tests chosen)

Item Code	Description	Classification
CQHDOA-128-THC	2-Panel SAFElife Hair Test for Canada; 25 Tests/Kit, THC 100 pg/mg and THC 200 pg/mg	Health Canada Authorized
CQHDOA-1128	12-Panel SAFElife Hair Test for Canada; 25 Tests/Kit, 6-MAM,AMP,BAR,BZO,COC,FTY,mAMP,MDMA,MTD,OPI,OXY,PCP	Health Canada Authorized

