



SAFE life™

## Multi-Panel Rapid Hair Test

Identify individuals who have been able to "pass" traditional urine tests while misusing substances to get them the help they need. The solution provides a comprehensive list of **18 drug tests and an impressive > 95% accuracy rate when compared with the gold standard LC-MS/MS testing**. No more waiting for negative results – send only positive samples (if needed) for confirmation, saving time and cost.

- Rapid detection of substance use between 2 weeks and 90 days
- E&I testing and Forensic Use Only testing panels
- Choose from a comprehensive menu of 18 accurate and reliable drug tests
- Customizable panel options
- Private and observed sample collection for donor protection
- Minimizes the risk of adulteration, ensuring result reliability
- Results in 5 mins (15 minutes for THC test)

### Available drug test menu with customizable panel options.

(Maximum panel size: 12-panel test)



- 6-Monoacetylmorphine (6-MAM)
- Amphetamine (AMP)\*
- Barbitol (BAR)
- Benzoylcegonine (BE)\*
- Buprenorphine (BUP)
- Benzodiazepines (BZO)\*

- Cocaine (COC)\*
- Fentanyl (FTY)\*
- Synthetic Marijuana (K2)
- Ketamine (KET)
- Methamphetamine (MET/mAMP200)\*
- Methamphetamine (MET/mAMP500)\*
- Methylenedioxymethamphetamine (MDMA)\*

- Methadone (MTD)
- Opiate (OPI)\*
- Oxycodone (OXY)\*
- Phencyclidine (PCP)\*
- Marijuana 200 (THC)
- Marijuana 100 (THC)
- Tramadol (TRA)

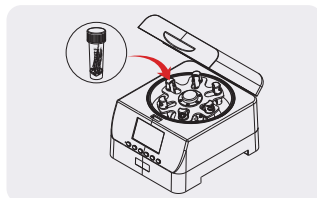
\* E&I

### Procedure

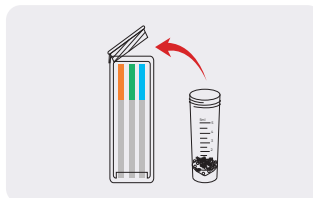
Efficient, accurate, on-site simplicity for drug testing confidence.



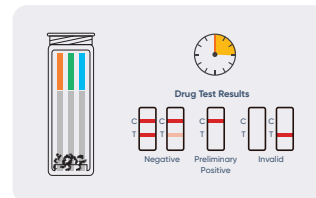
Collect the hair sample, place it into the processing tube, and screw the cap.



Insert the processing tube into the SAFE life™ hair processor and press the start button.



Remove the processing tube. Wait 3 minutes for sample cooling and pour the tube contents into the testing cube.



Read the results between 5 to 15 minutes depending on the tests chosen.

Item Code	Description	Classification
QHDOA-118-THC	1-Panel Safelife Hair Test; THC 100	Forensic Use Only
QHDOA-128-THC	2-Panel Safelife Hair Test THC 100 and THC 200 cut-off	Forensic Use Only
QHDOA-198	9-Panel Safelife Hair Test; AMP500, BZO, COC, FTY, MET500, MDMA, OPI, OXY, PCP	Forensic Use Only
QHDOA-1108	10-Panel Safelife Hair Test; AMP, BAR, BUP, BZO, COC, FTY, MAMP, OPI, OXY, PCP	Forensic Use Only
QHDOA-1128	12-Panel Safelife Hair Test; 6-MAM, AMP, BAR, BZO, COC, FTY, mAMP, MDMA, MTD, OPI, OXY, PCP	Forensic Use Only

Rel.: 2025/03/12