



**SAFE life™**

# Hair Processor & Multi-Panel Rapid Hair Test

**Where Every Strand Holds the Key to a Safer Tomorrow!**

When it is important to identify long-term drug use quickly, there is no better choice than the SAFE life™ Hair Processor, designed for on-site testing, with a comprehensive list of 18 drug tests and an impressive **above 95% accuracy rate when compared with the gold standard LC-MS/MS testing**. No more waiting for negative results – send only positive samples for confirmation, saving time and cost.

## SAFElife Mobile Hair Processor and Tests

- \* Results in 5 min (15 min for THC)
- \* Choose from a comprehensive menu of 18 accurate and reliable drug tests
- \* Customizable panel options
- \* Private and observed sample collection
- \* Minimizes the risk of adulteration, ensuring result reliability
- \* Captures long-term drug use history from 2 weeks to 90 days



## Available drug test menu with customizable panel options.

Maximum panel size: 12-panel test

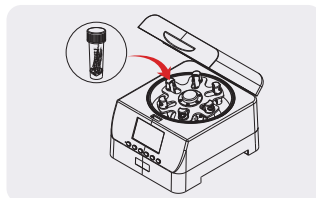
- 6-Monoacetylmorphine (6-MAM)
- Cocaine (COC)
- Methadone (MTD)
- Amphetamine (AMP)
- Fentanyl (FTY)
- Opiate (OPI)
- Barbitol (BAR)
- Synthetic Marijuana (K2)
- Oxycodone (OXY)
- Benzoylcegonine (BE)
- Ketamine (KET)
- Phencyclidine (PCP)
- Buprenorphine (BUP)
- Methamphetamine (MET/mAMP200)
- Marijuana 200 (THC)
- Benzodiazepines (BZO)
- Methamphetamine (MET/mAMP500)
- Marijuana 100 (THC)
- Methylenedioxymethamphetamine (MDMA)
- Tramadol (TRA)

## Procedure

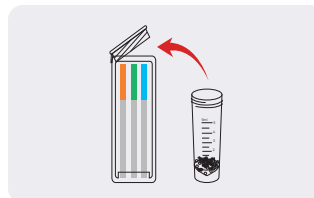
Efficient, Accurate, On-site simplicity for drug testing confidence.



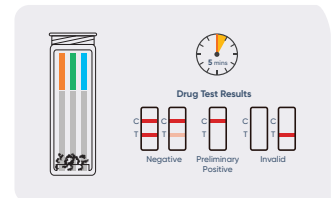
Collect the hair sample, place it into the processing tube, and screw the cap.



Insert the processing tube into the SAFE life™ Hair Processor and press the start button.



When processing is complete, remove the processing tube and wait 3 minutes for the sample to cool. Pour the contents into the test cube.



Read the results at 5 minutes. (15 minutes for THC)

| Item Code     | Description   | Classification    |
|---------------|---|-------------------|
| QHDOA-118-THC | 1-Panel Safelife Hair Test; THC 100   | Forensic Use Only |
| QHDOA-128-THC | 2-Panel Safelife Hair Test THC 100 and THC 200 cut-off                                      | Forensic Use Only |
| QHDOA-198     | 9-Panel SAFElife Hair Test; AMP500, BZO, COC, FTY, MET500, MDMA, OPI, OXY, PCP              | Forensic Use Only |
| QHDOA-1108    | 10-Panel Safelife Hair Test; AMP, BAR, BUP, BZO, COC, FTY, MAMP, OPI, OXY, PCP              | Forensic Use Only |
| QHDOA-1128    | 12-Panel Safelife Hair Test; 6-MAM, AMP, BAR, BZO, COC, FTY, mAMP, MDMA, MTD, OPI, OXY, PCP | Forensic Use Only |

Rel.: 2025/03/05